

Face Cane Components: Cheeks and Nose by [Irish Red](#)

[Adobe Acrobat version](#)

[Editor's Letter](#) | [Letters to the Editor](#) |
[Questions and Answers](#) | [Tere Perry](#) |
[Gertsch Feather Cane](#) | [Bead Box](#) |
[Delft Effects in Polymer Clay](#) | [Face](#)
[Cane: Cheeks and Nose](#) | [Insight and](#)
[Inspiration](#) | [October Holiday Art](#) |
[Email Us!](#) | [Home](#)

[Advertisers' Page](#) |

Making noses and cheeks take less time than anything else, so they're here together.

Supplies:

- Clay : Cheek color, flesh, brown
- Blade
- Pasta machine or roller

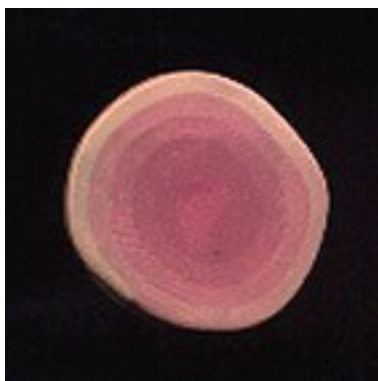
Cheeks

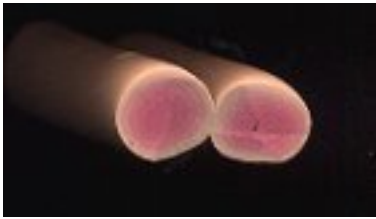
Step One:

Make a Skinner Blend with your choice of cheek color and flesh. Do you want rosy cheeks or just a hint? Add a bit of red for a healthy glow or a bit of brown to emphasize cheek bones.

Step Two:

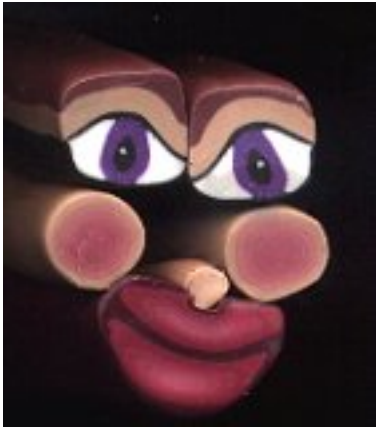
Decide how large you want to make the "blush" on the cheeks. Remember, there are two cheeks, so you need to make the cane twice the size you need for each cheek. Make a jelly roll with the flesh color outside.





Step Three:

Reduce, and cut in half. Let rest.



Nose

Step One:

Refer back to your drawing. Are all the components of the face in proportion? Put them together loosely and make a quick check. Peel them apart carefully. (Kinda scary, huh?)

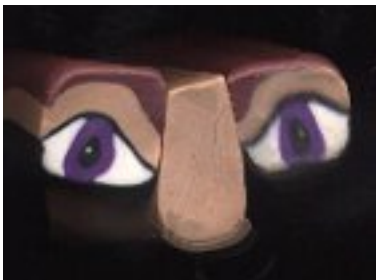


Step Two:

Pinch a log of clay into a narrow, longish tapered triangle and place between the eye canes. Do you like it? If not, adjust until you do.

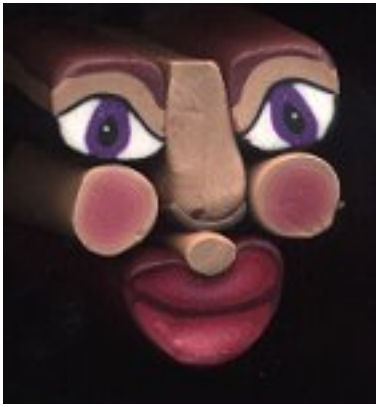
Remember when shaping the nose that it's in the center of the cane and won't move as much when it's reduced, so don't give the poor face a beak.

If you're satisfied, you're done adjusting the nose size.



Step Three:

Roll out a thin sheet of brown clay and lay across bottom of the nose. Trim excess.



Step Four: Put all of the components back together to recheck if the nose works. Adjust as necessary. Take cheeks and mouth off but leave eyes and nose together.

Note: There will be more space between the components on finished cane.

Next month: Wrapping and filling in negative space.

© 2002 Irish Red

[Editor's Letter](#) | [Letters to the Editor](#) | [Questions and Answers](#) | [Tere Perry](#) | [Gertsch Feather Cane](#) | [Bead Box](#) | [Delft Effects in Polymer Clay](#) | [Face Cane: Cheeks and Nose](#) | [Insight and Inspiration](#) | [October Holiday Art](#) | [Email Us!](#) | [Home](#)

[Advertisers' Page](#) |



Advertisers' Page

[Email Us!](#) | [Home](#)

Here you can find links to this month's advertisers. They are on-line, convenient, and supporting Polyzine.

We encourage you to visit them all to see what wonderful products await.

[A](#) [B](#) [C](#) [D](#) [E](#) [F](#) [G](#) [H](#) [I](#) [J](#) [K](#) [L](#) [M](#) [N](#) [O](#) [P](#) [Q](#) [R](#) [S](#) [T](#) [U](#) [V](#) [W](#) [X](#) [Y](#) [Z](#)

A B C

[The Clay Alley](#): For all your polymer clay supplies. Premo, hinged tins, eraser clay, PearlEx, tools, Weldbond glue.

D E F

G H I

J K L

M N O

P Q R

[Polka Dot Creations](#): Choose from our wide selection of polymer clay instructional books and videos, most at 20% OFF list price. Or drop by and reserve copies of this season's forthcoming titles at an even higher discount. Indulge in a piece of delicious eye-candy, or learn an amazing new technique from the masters of the medium!

S T

[Simply Darling Creations, Inc.](#): Offering the Darlin' Designer Disk TM. Shaped extrusions are now possible! 200 incredible detailed shapes arranged in 20 Theme Kits at a very affordable price.

U V W

X Y Z