

Haunted Toilet Snow Globe

By [Garie Sim](#)

Even though Halloween seems months away, here's a project you won't mind starting today! Garie Sim has created a wonderful snow globe tutorial featuring a ghostly toilet, but you can use his instructions to create snow globes with any interior scene.



Supplies:

Eberhard globes are best in quality. The fitting between the globe and base is good.

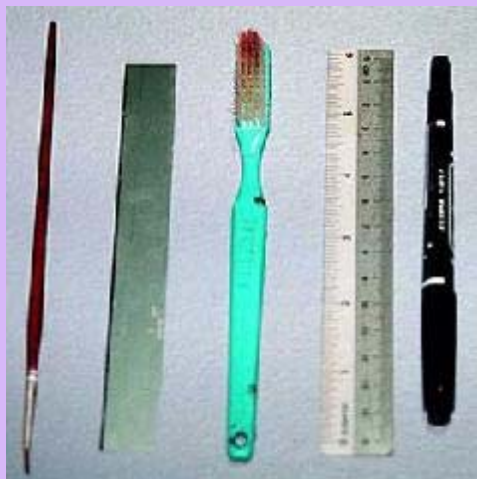
Polymer clays come in many types. I prefer Fimo Classic, Sculpey Premo and Cernit. For this project, I also use Fimo Soft as it glows brighter than other glow in the dark polymer clay.

You can buy **glow in the dark glitters** in a craft store. Adding this will give a glowing effect around the globe as you shake it.

Preservative can be purchased at a shop selling Fimo products. You just need two to three tiny drops into the globe filled with water.

Use any type of **super glue** for the above project.

Lastly, to seal the globe, you need liquid **plastic cement**.



Tools:

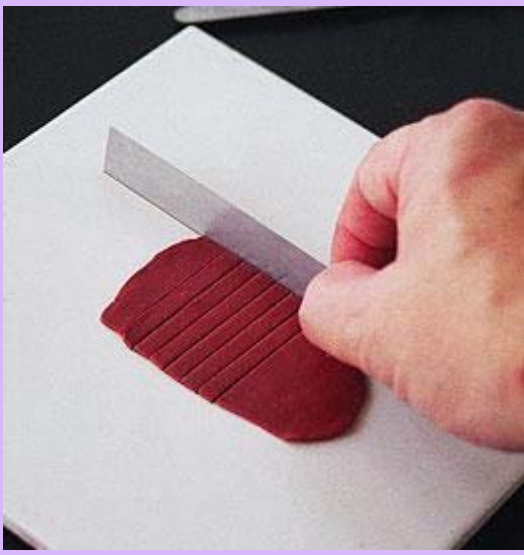
The **medium fine acrylic paint brush** is used for weathering the ground and the toilet with acrylic paint.

The **tissue blade** is for cutting the polymer clay into tiny terracotta tiles.

Always my favorite tool, **the toothbrush**, is for texturing the clay surfaces.

The **ruler** will help you to scale the size of your model, so that it will fit into the globe. (*Use a metric ruler to be able to follow Garie's instructions below -- Ed.*)

Finally, the **permanent fine and medium tip marker** is for creating hair line cracks and graffiti on the toilet walls.



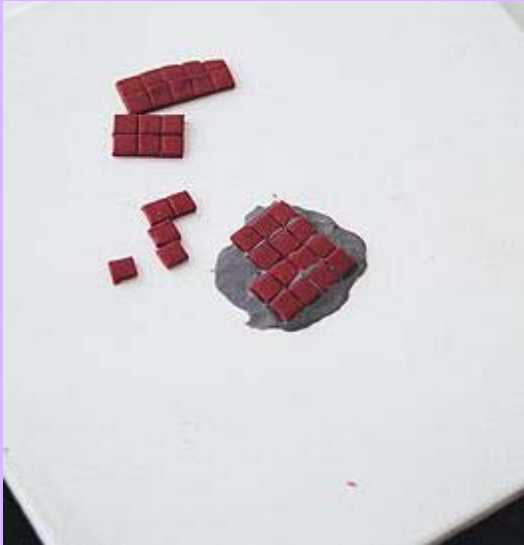
Step One: Creating floor tiles, toilet bowl and cistern

Tiles:

Roll a piece of terracotta color polymer clay to a thickness of 1.0 mm and approximately 30 mm by 30 mm size.

Cut 6 lines horizontally and vertically to a spacing of 5.0 mm. Refer to [Plan And Design](#) for floor tile pattern.

Remove the excess polymer clay and bake it in the oven for 10 minutes at 130°C/275°F. Let the baked clay cool down.



Create "cement mortar" with a piece of gray polymer clay. Place the tiny tiles according to the cut pattern, leaving a tiny space in between the tiles.

Fill the gap with the clay. Do not to worry about the leveling of the tiles, it should be uneven.

The completed pattern be five tiles laid horizontally and six tiles laid vertically.

Trim away the excess "mortar" and bake the tiles in the oven for 10 minutes. After baking, you can weather the tiles by using sandpaper to scratch the surface. Use acrylic paint to dirty the floor, pop up a few tiles and crack the tiles with a sharp blade. Use super glue to fix the broken tiles to the "cement mortar".



Toilet Bowl and Cistern:

To create the toilet bowl and the cistern, use translucent polymer clay.

The pipes are created from silver clay. You can create your own silver clay by adding fine silver paint powder to the gray clay.

Roll two silver pipes approximately 1.0 mm diameter by 17 mm length. One pipe is connected to the bowl and cistern. Lean the other against the toilet wall to create a loose pipe.

Refer to the scale for the toilet bowl and cistern in [Plan And Design](#).



After baking in the oven, assemble the toilet cover, bowl and cistern with super glue.

Weathering of the toilet system requires acrylic paints and a fine tip permanent pen. Using acrylic paints, create rusty pipes, dirty bowl and cistern etc.

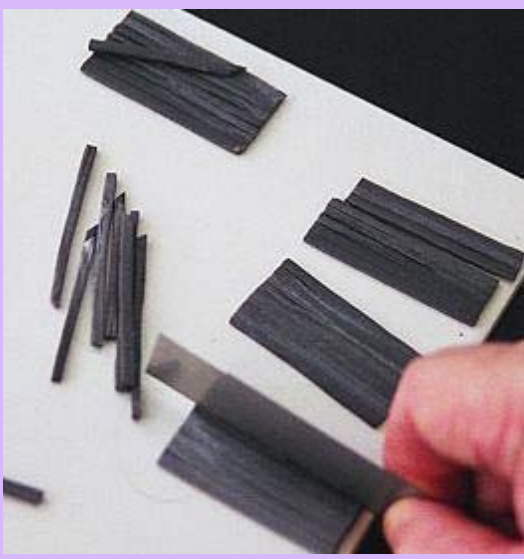
Create cracks on the toilet cistern using the fine tip pen.

Step Two: Creating the clay "timber" panels and installing toilet bowl

To create clay "timber" panels and "timber" joists, mix white, black and gray polymer clay.

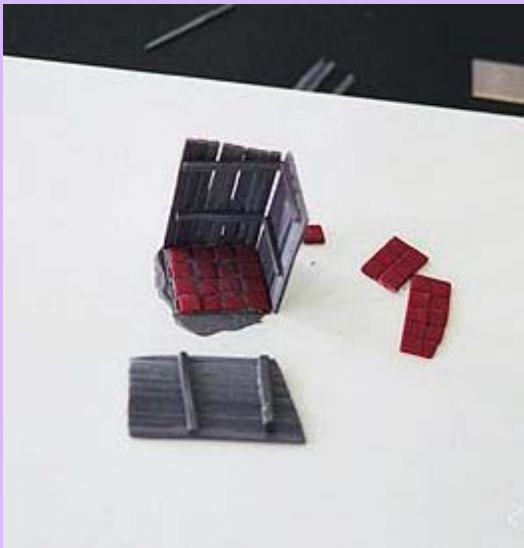
Roll and flatten the clay to 1.0 mm thickness by approximately 50 mm length. Pay attention to the marbling pattern in the clay: it must be in a linear direction similar to the natural wood grains.

Cut the clay to 3 mm wide strips (approximately ten strips should be enough to cover 30 mm width for the four sides of the toilet). The timber joist width is approximately 1.5 mm by 1.0 mm thick, cut sufficient to cover the door and the "timber" structures.



Texture the "timber" with the blade to simulate timber grains.

Bake the clay for 10 to 15 minutes. When cool you can trim it to the required height of 45 mm. (Built the clay "timber" panel according to the design in [Plan And Design](#).)



Assemble and glue the completed toilet panel with super glue and trim away the excess clay "cement" mortar.

If you wish to scribble any phone number or any remarks on the toilet wall, do it now with the fine tip permanent pen.



Position your toilet system and the pipe before enclosing the toilet with the clay "timber" panel and glue it into the position.

Rough the edges of the "timber" panels with small box cutter blade or tissue blade.



Finally, create the door and assemble all the wall panels.

You may add more detailing on the exterior sides of the "timber" panel.

Dirty the toilet further with acrylic paint if you are not satisfied with the result.